



Prefabricated Modular Versatile Kit Homes

Purpose Designed for Climate Extremes



The Versatile DreamDome Range of Kit Home Modules

Ideal for Compact Housing of all Kinds

DreamDome combines the most efficient shaped structure with the most efficient composite materials.

DreamDome Features

- Delivered as a complete kit
- Easy and fast to assemble
- All parts are totally finished
- Double glazed aluminium casement, awning, or louvre windows & skylight
- Easy to clean – no mold
- Choose your panel colour finishes
- Electrical conduits are ready for wiring
- Cool in summer, warm in winter
- Relocatable comfortable secure living spaces

DreamDome Performance

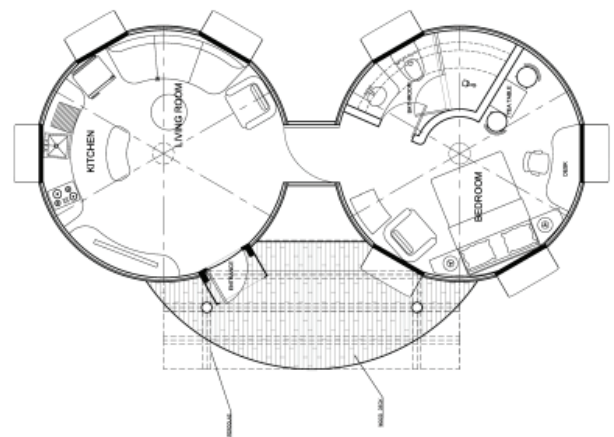
- Purpose designed for safe secure housing
- Up to Category 5 Cyclone, hurricane or higher
- Earthquake resistant, Impact resistant
- Flood damage proof
- Termite and insect proof
- Hard wearing GEL-coat finishes
- Insulated panels (R3.0 metric - R17 US value)
- Install on pre-made concrete slab or timber platform
- Low maintenance
- 10 Year Structural Warranty

Possible Uses for a DreamDome

Compact housing, granny flat, tiny house
Tourist accommodation, guest cabin
backyard studio, office, garden room, sleep out
meeting room, yoga, meditation
storm shelter

Connecting two or more domes together opens a new world of design options for multi-dome kit homes.

New modules can be connected to any other at any time.



DreamDome is the fulfilment of a vision
green aerospace technology, combined in the most efficient shape
cost effective living system for the 21st century and beyond.
(indicative pricing as at Dec 2022)

The DreamDome prefabricated modular dome building system is delivered to your door as a completely finished Kit.

Indicated pricing contained in this brochure are for a standard, specific configuration and inclusions. DreamDome supply high quality components and fittings.

What is DreamDome made of?

The DreamDome comprises a core of fire retarded structural polyurethane foam bonded to glass fiber reinforced structural skins either side. UV and fire resistant, the panels are precision factory made with concealed, cyclone/hurricane rated connection systems for locking the panels together.

DreamDome comes with the option of a recycled or recyclable PET foam core. This option will add approx 10% to the cost of the dome and reduce the thermal efficiency by approximately 50%

Features of a DreamDome Kit

-
- Different size DreamDomes are inter-connectable
- Arrives in pre-finished panels
- Choice of plain panels and window/door panel can be placed at any location around the floor platform
- Choose your pre-finished colours inside and out
- Panel parts bolt together by an innovative concealed joining system
- Internal walls, bathrooms and kitchen designed to fit like a kit.
- No painting or finishing required
- Insulated against heat and cold
- Zero on site waste
- Fast to assemble
- Install on either a concrete slab or timber platform (not included in the price)
- Relocatable
- Low (no) maintenance
- Double glazed windows
- High impact resistance
- Cyclone and hurricane rated, earthquake resistant - to international construction code standards
- Termite, insect proof
- Flood damage proof
- US R value of 2 in (50mm) of closed cell PU foam is approx R15
- Comes with a video and hard copy assembly manual
- 10 year warranty

Can the DreamDome be Custom Designed?

Yes, we can customise the internal layout of bathroom, kitchen and internal walls for orders of multiple units,. You can choose your colour scheme

As we progress more options will be available together with an increasing range of customised accessories.

NOTE: All prices quoted are for a complete Kit delivered to site ex Brisbane, Sydney, Melbourne or Fremantle ports. Includes a full set of plans, (slab design option), installation instructions and manual. Does NOT include assembly



DreamDome 3.5 - 9.6m² floor area

Complete Kit - from \$34,500 (+ GST)

Backyard studio, office, meditation, yoga

Base model Includes 6 insulated panels (50mm thick core) 820 entrance door, 2 x windows and screens, 400mm diameter skylight and engineered plans. (shipping not included)



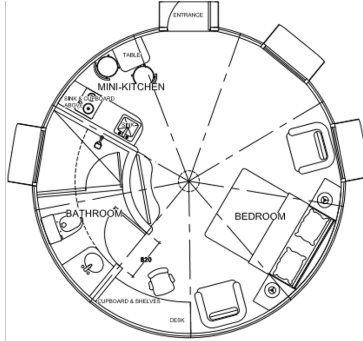
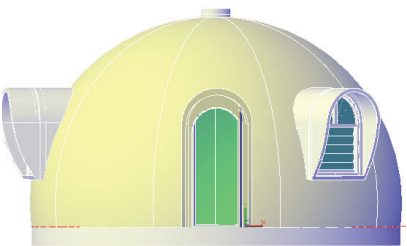
DreamDome 5.0m - 19.6m² floor area

Complete Kit - from \$52,000 (+ GST)

Inc bathroom & kitchen \$59,000 (+ GST)

Guest accommodation, tiny house or one pod of a multi pod home

Base model – Includes 7 insulated panels (50mm thick core), 820 entrance door, 3 x windows and screens, 400mm diameter skylight, and engineered plans. (shipping not included)



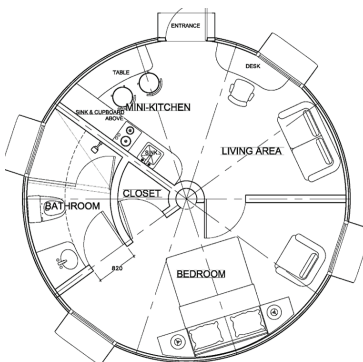
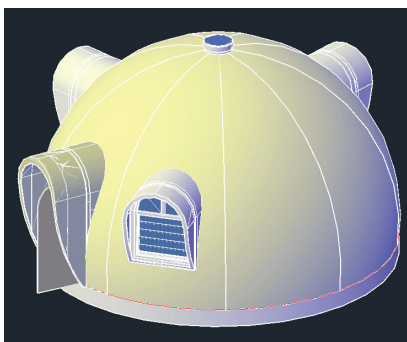
DreamDome 6.0m - 28m² floor area

Complete Kit - from \$65,000 (+ GST)

Inc bathroom & kitchen \$74,000 (+ GST)

Pre-order only for delivery 2018 - Guest accommodation, tiny house, granny flat

Base model – Includes 9 insulated panels (60mm thick core), 820 entrance door, 4 x windows and screens, 400mm diameter ventilated skylight, and engineered plans. (shipping not included)



DreamDome 6.5m - 33m² floor area

Complete Kit - from \$79,700 (+ GST)

Inc bath, kitchen, partition \$86,700 (+ GST)

Guest accommodation, tiny house, granny flat or one pod of a multi pod home

Base model - Includes 10 insulated panels (60mm thick core), 820 entrance door, 4 x windows and screens, 400mm diameter ventilated skylight plus set of engineered plans. (shipping not included)

NOTE: All prices quoted are for a complete Kit delivered to site up to 50 km from a container port. Includes a full set of plans, (slab design option), installation instructions and manual. Does NOT include assembly of the floor platform or the dome shell. A concrete slab is additional